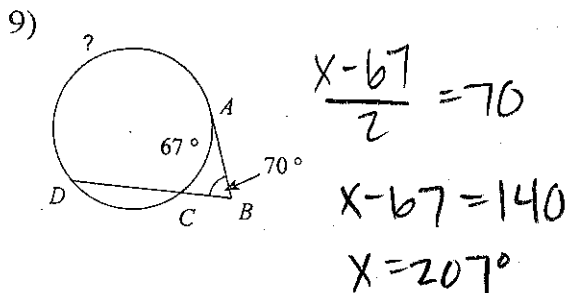
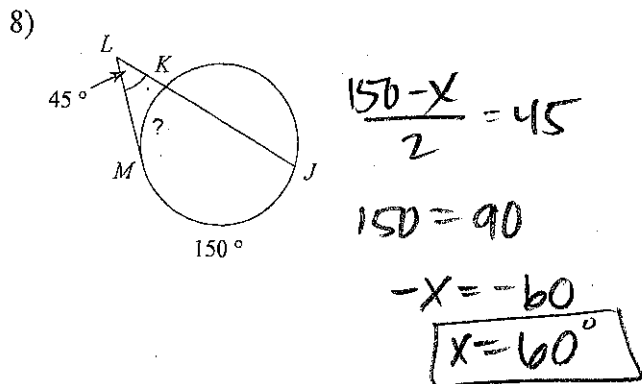
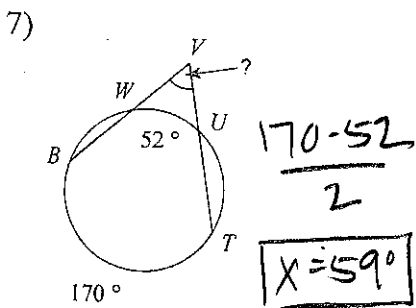
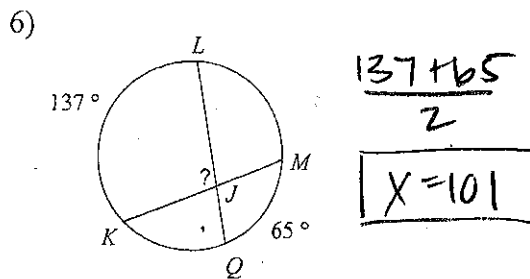
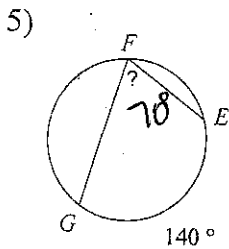
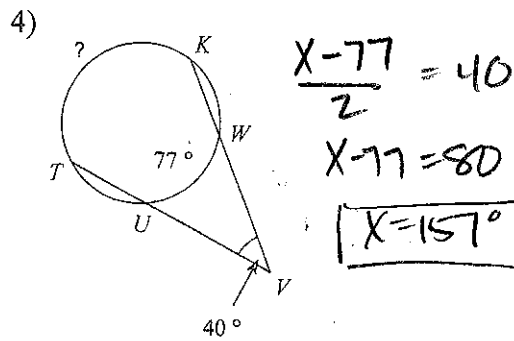
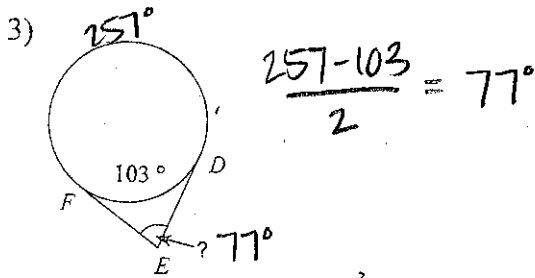
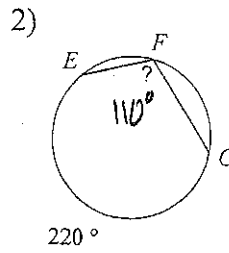
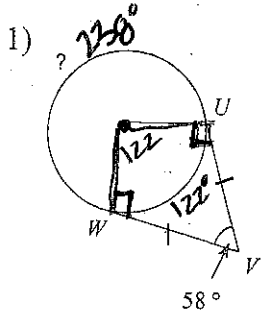
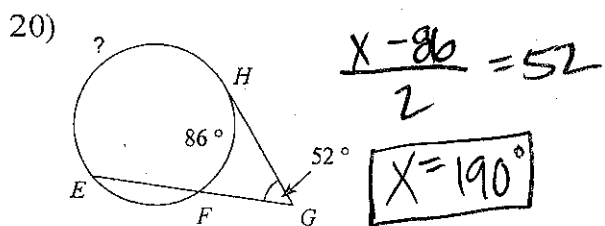
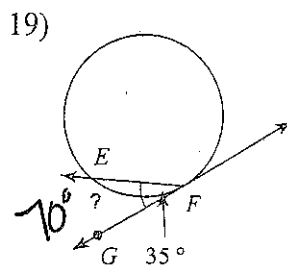
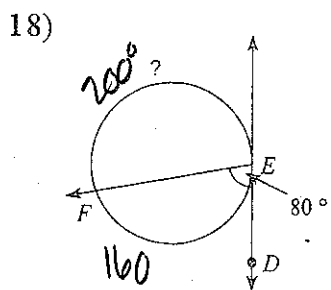
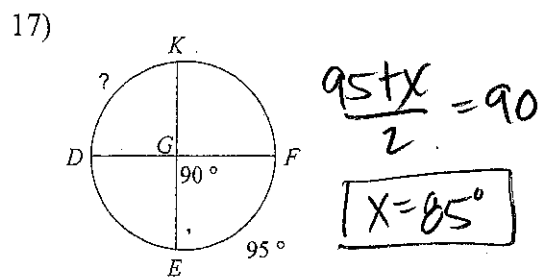
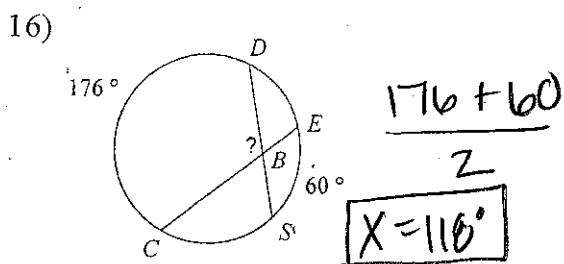
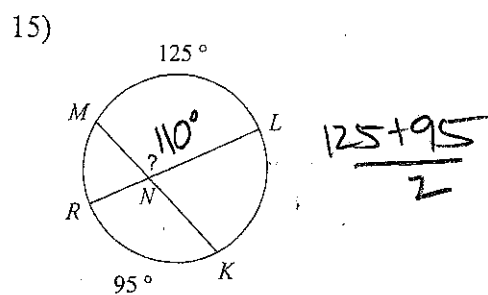
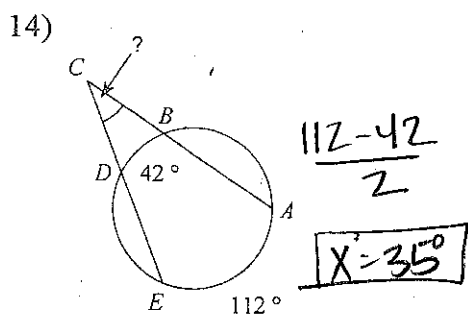
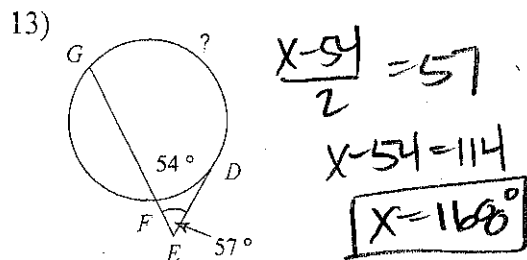
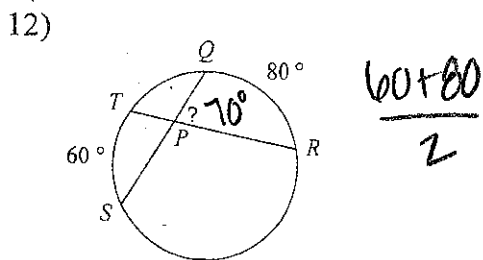
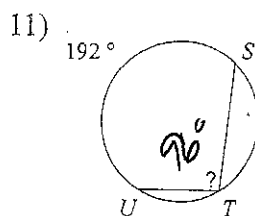
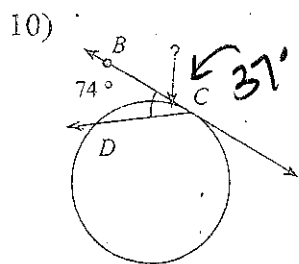


Secant, Incirbed and Tangent Angles ("Innies" "Outies" and "On")

Find the measure of the arc or angle indicated. Assume that lines which appear tangent are tangent.





Answers to Secant, Incrined and Tangent Angles ("Innies" "Outies" and "On") (ID: 1)

- 1) 238°
- 5) 70°
- 9) 207°
- 13) 168°
- 17) 85°

- 2) 110°
- 6) 101°
- 10) 37°
- 14) 35°
- 18) 200°

- 3) 77°
- 7) 59°
- 11) 96°
- 15) 110°
- 19) 70°

- 4) 157°
- 8) 60°
- 12) 70°
- 16) 118°
- 20) 190°