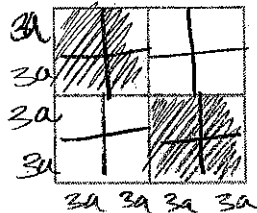


Combining Polynomials- Jigsaw

1. A floor game uses a grid represented by two dark gray spaces and two white spaces. If each floor grid has four squares, and the side of each square is represented by $3a$, what expression represents the area of the entire floor grid?

MULT.

$$12a(12a) = 144a^2$$



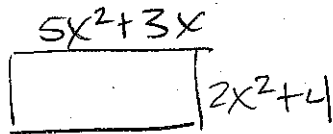
2. The lengths of the correct paths through a maze are represented by $3x + 6$, $2x + 2$, $5x - 3$, $-4x + 1$, and $8x + 3$. Write an expression that represents the length of the correct path through the maze.

ADD.

$$6x^2 + 14x + 9$$

perimeter

3. While Stacey loves the wild rabbits in her back yard, she would like to keep the little critters out of her vegetable garden. If her vegetable garden is a rectangle whose width is represented by $5x^2 + 3x$ and whose length is represented by $2x^2 + 4$, write an expression that represents the amount of fencing needed to enclose the veggie garden.



perimeter

$$2(2x^2 + 4) + 2(5x^2 + 3x) = 10x^2 + 6x + 8$$

4. In the year 1995, the average cost of a cellphone could be modeled by the expression $-10t^2 + 1600$ where t is the number of years since 1995. By the year 2009 the average cost had changed, so it could be modeled by the expression $-18t^2 + 800$. Find the difference in the average costs for a cellphone between 2009 and 1995.

Sub. substitute

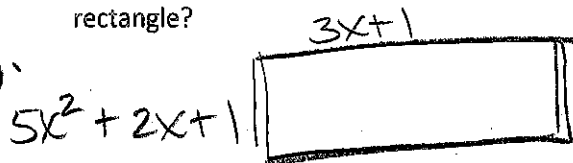
$$2009 - 1995$$

$$-18t^2 + 800 - (-10t^2 + 1600)$$

$$-18t^2 + 800 + 10t^2 - 1600$$

$$-8t^2 - 800$$

5. If the length of a rectangle in terms of x is $5x^2 + 2x + 1$, and its width is $3x + 1$, what is the perimeter of this rectangle?



$$2(3x + 1) + 2(5x^2 + 2x + 1)$$

$$6x + 2 + 10x^2 + 4x + 2$$

$$10x^2 + 10x + 4$$

6. Bob mowed $2x^2 + 5x - 3$ yards on Monday, $4x - 7$ yards on Tuesday, and $3x^2 + 10$ yards on Wednesday. How many yards did he mow in the three days? combine

ADD.

$$2x^2 + 5x - 3 + 4x - 7 + 3x^2 + 10 = 5x^2 + 9x$$

7. Molly has $4x + 10$ dollars and Ron has $-5x + 20$ dollars.

- a. How much money do they have altogether?

ADD

$$(4x + 10) + (-5x + 20) = -x + 30$$

- b. How much more money does Molly have than Ron?

ADD & SUB.

$$4x + 10 - (-5x + 20) = 9x - 10$$